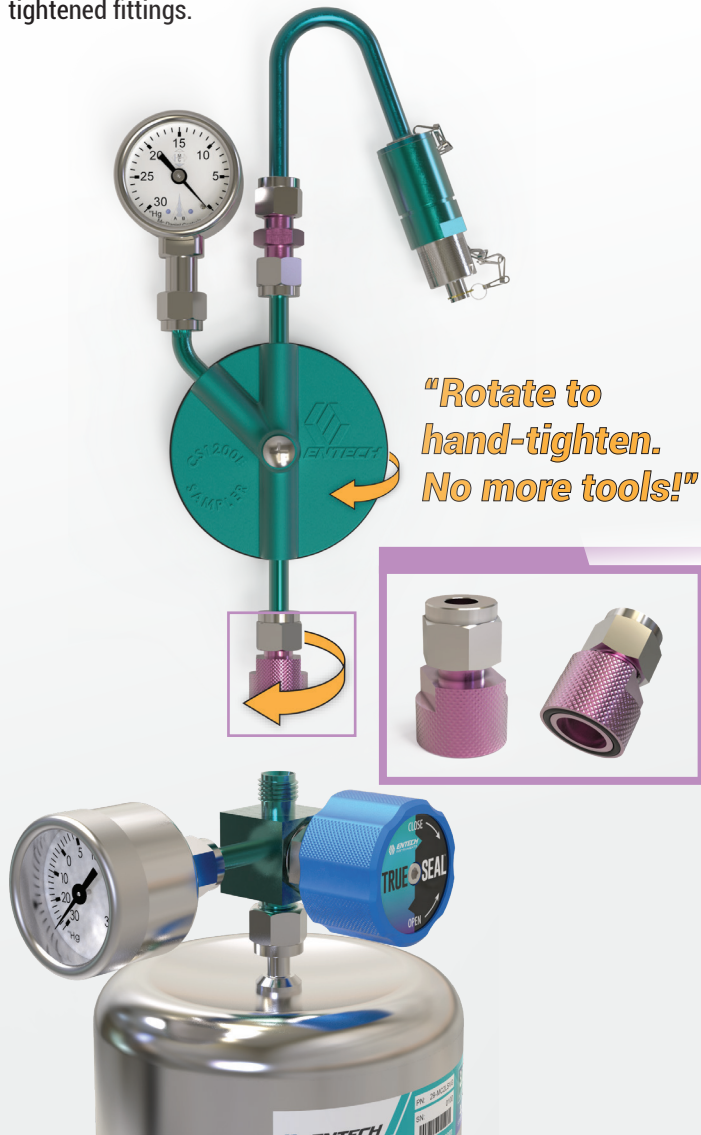


# Thank You for Trying the New Entech FlowMate Adapters!



**For field sampling. FlowMate to Compression (Part # FM4-400S) -** 1/4" Face-Sealing FlowMate to 1/4" compression Adapter compatible with TrueSeal™ Valves.

The FlowMate Tube Adapter allows for the CS1200E and other sample introduction fittings to be quickly hand tightened to the top of any TrueSeal valve providing an efficient and reliable alternative to tool tightened fittings.



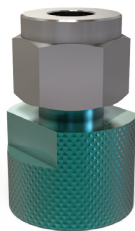
**For the lab. FlowMate to MQT (Part # FFM4-MQTS) -** 1/4" Face-Sealing FlowMate to Male QT Valve Adapter compatible with TrueSeal™ Valves.

The FlowMate Micro-QT™ TrueSeal Valve adapter eliminates the need for nut and ferrule connections, making your canisters truly tool-free and providing an easy way to support robotic auto-sampler analysis and quick-connect canister cleaning.



# FlowMate

## FlowMate to Compression



**FM4-400S**  
1/4" Face-Sealing FlowMate to  
1/4" compression, Silonite coated



**FM4-200S**  
1/4" Face-Sealing Flowmate to  
1/16" compression, Silonite coated

## FlowMate MQT



**FM4-MQTS**  
1/4" Face-Sealing FlowMate to  
Male QT valve, Silonite coated

## FlowMate FQT



**FM4-FQTS**  
1/4" Face-Sealing FlowMate to  
Female QT valve, Silonite coated



**FM2-MQTS**  
1/8" Face-Sealing FlowMate to Male  
QT valve, Silonite coated



**FM1-FQTS**  
1/16" Face-Sealing FlowMate to  
Female QT valve, Silonite coated