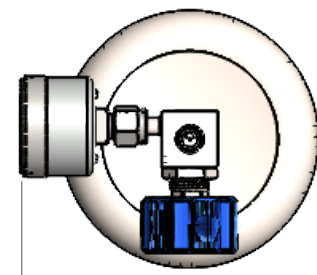
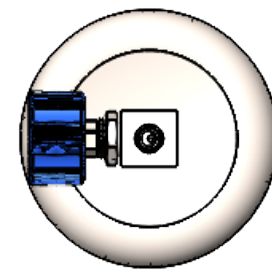
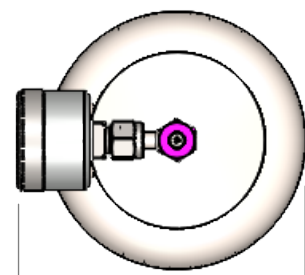
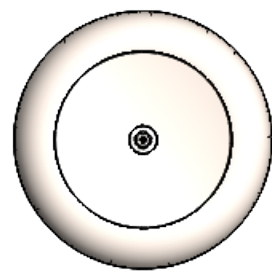
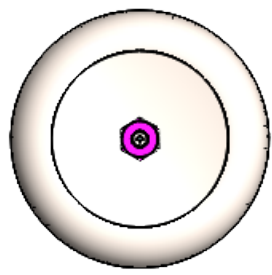
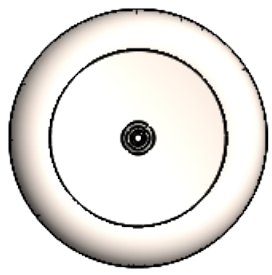


4

3

2

1



1.4L
.99 lbs (450g)
29-MC14LNF

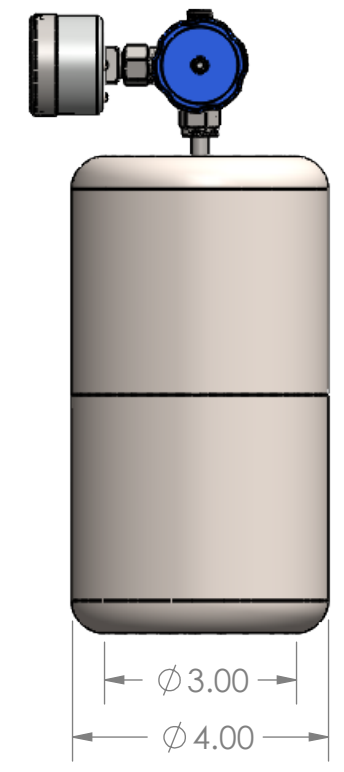
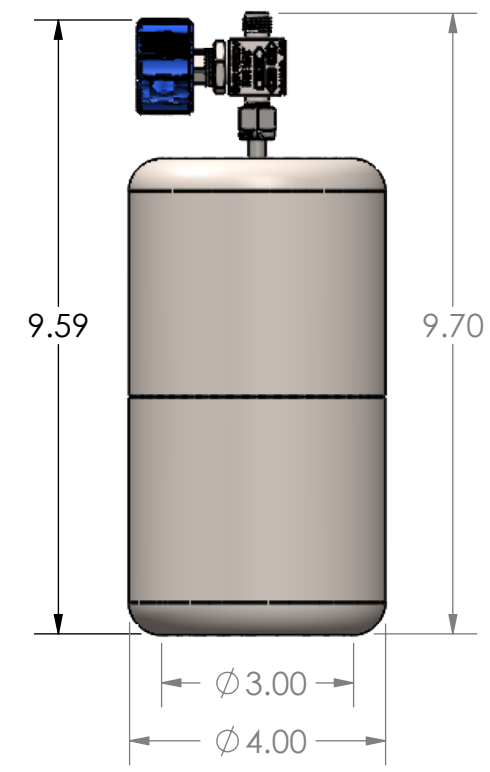
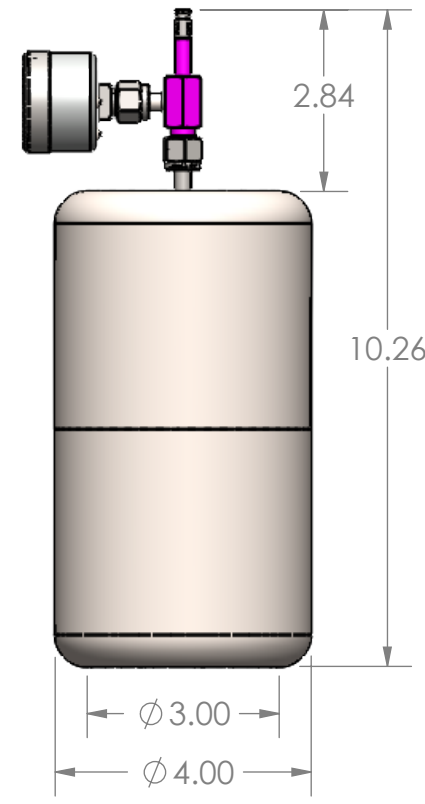
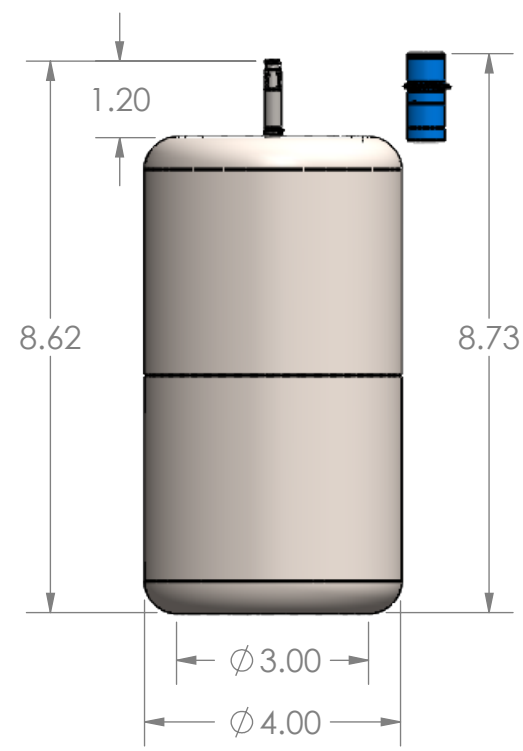
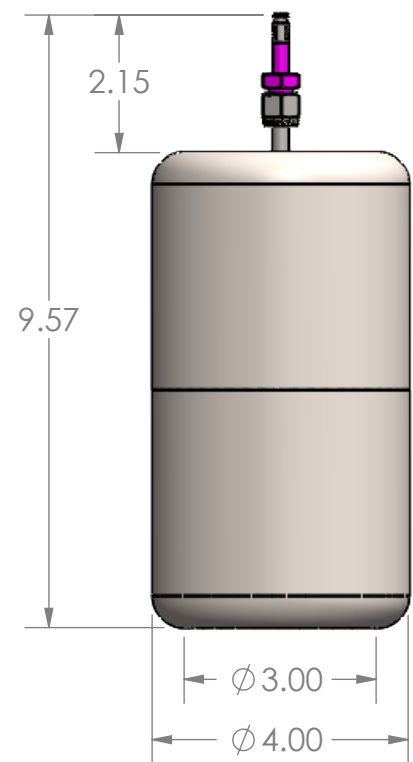
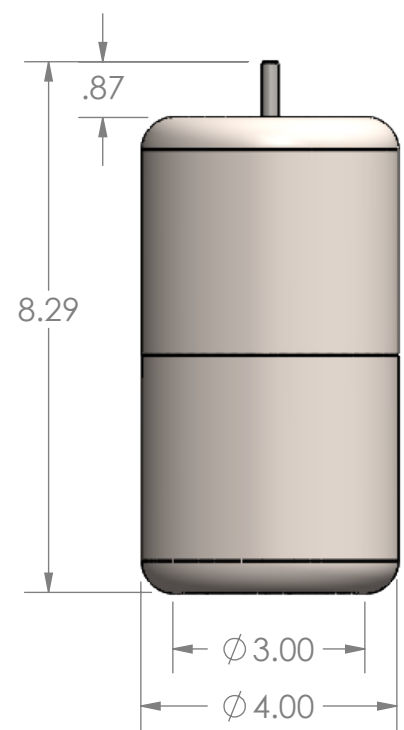
1.4L
1.05 lbs (475g)
29-MC14LQT

1.4L
1.03 lbs (465g)
29-MC14LQTI
+Micro QT Cap,
39-92194-QTI

1.4L
1.28 lbs (582g)
29-MC14LQTG

1.4L
1.39 lbs (628g)
29-MC14LSV

1.4L
1.58 lbs (715g)
29-MC14LSVG



B

B

A

A

4

3

2

1

PROPRIETARY AND CONFIDENTIAL
THE INFORMATION CONTAINED IN THIS DRAWING IS THE SOLE PROPERTY OF Entech Instruments Inc. ANY REPRODUCTION IN PART OR AS A WHOLE WITHOUT THE WRITTEN PERMISSION OF Entech Instruments Inc IS PROHIBITED.

UNLESS OTHERWISE SPECIFIED:		NAME	DATE
DIMENSIONS ARE IN INCHES		DRAWN	RD 11/1/15
TOLERANCES:		CHECKED	CB 02/18/19
FRACTIONAL ± 1/100		ENG APPR.	CB 04/30/19
ANGULAR: ± 1°		MFG APPR.	TH 11/20/15
X: ± 0.1		Q.A.	RD 11/30/15
XX: ± 0.03		DESCRIPTION:	Air Sampling Canisters
INTERPRET GEOMETRIC TOLERANCING PER: ASME Y14.5-2009	MATERIAL	316 SS	
FINISH	Electropolish		

Entech Instruments Inc.	
TITLE: 1.4L Silonite MiniCans	
SIZE B	REV 5
SCALE: 1:3	SHEET 1 OF 1