

**NiFTY**  
NICKEL FERRULE TECHNOLOGY

**Common sense,  
Uncommon results.**



Your Entech products now come with NiFTY nickel ferrules. These new ferrules are a game changer for the air and gas sampling community. Learn more inside!

 **ENTECH**  
INSTRUMENTS

*See What's Really There™*

## NIFTY

Meet the Best of Both Worlds.  
The durability of stainless  
steel with the convenience  
of graphite and significantly  
less contamination!

Nickel has long been known for its superior inertness relative to even 316 stainless steel. Through years of development, Entech has created a pure Nickel ferrule that improves overall performance when compared to any other ferrule currently used for whole air sampling and analysis.





## WHY NICKEL?

---

The unique properties of Nickel create the best combination of inertness, low carryover, and replaceability, so you never have to throw away a fitting, flow controller, (or worse) a 6L canister because your ferrule or ¼" Swagelok style nut failed you. With Entech's new Nickel Ferrule Technology (NiFITY), you can have the durable and non-absorptive performance of stainless steel ferrules, with the ability to remove and replace ferrules should a problem develop with the compression nut or fitting. The patent pending design creates a semi-permanent ferrule connection, so the ferrule will never fall off unintentionally.



## THE BEST OF BOTH WORLDS

---

Nickel ferrules seal and are easily replaceable just like Graphite-Vespel™ ferrules, yet just like stainless steel ferrules, they are also non-contaminating and cannot be removed by hand. Just another of the many “NiFTY” innovations you’ve come to expect from Entech. Order a pack of nickel ferrules today!



## CRACKS & CONTAMINATION

Graphite Vespel™ ferrules can crack, causing serious leaking issues in sampling trains. Additionally, these ferrules are a common source of cross-contamination.



## FALLING FERRULES

Have you noticed that Graphite Vespel™ ferrules always seem to want to slide off? A dirty floor can also contaminate the ferrule thereby jeopardizing your sample.



## DAMAGED STEMS CAN BE COSTLY!

It is near impossible to remove stainless steel ferrules without doing significant damage to tubing or stems. This can leave expensive equipment unusable since Stainless Steel ferrules are permanent.

## NIFTY FERRULE REMOVER

Entech Instruments  
NiFTY Ferrule Remover  
is specifically designed  
to ease the hassle of  
removing ferrules.

The NiFTY Ferrule Remover  
has a large knob that lowers  
a screw as you turn it, pulling  
out the nut and ferrule with  
minimal damage to the stem!



## NIFTY FERRULES

---

Yet another commitment by Entech to provide our customers with technology that will endure the tortures of real world sampling and analysis. If your battle-worn fittings and air samplers need a boost, consider Entech's products to revitalize and rejuvenate your arsenal.



# NIFTY ASSEMBLY INSTRUCTIONS

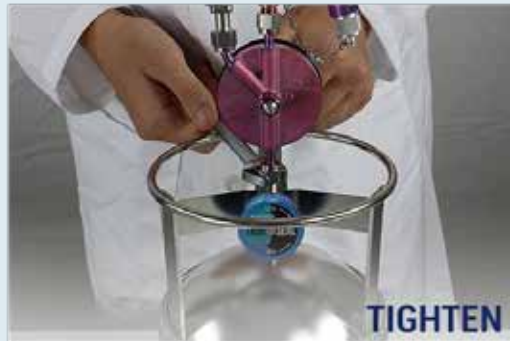
---

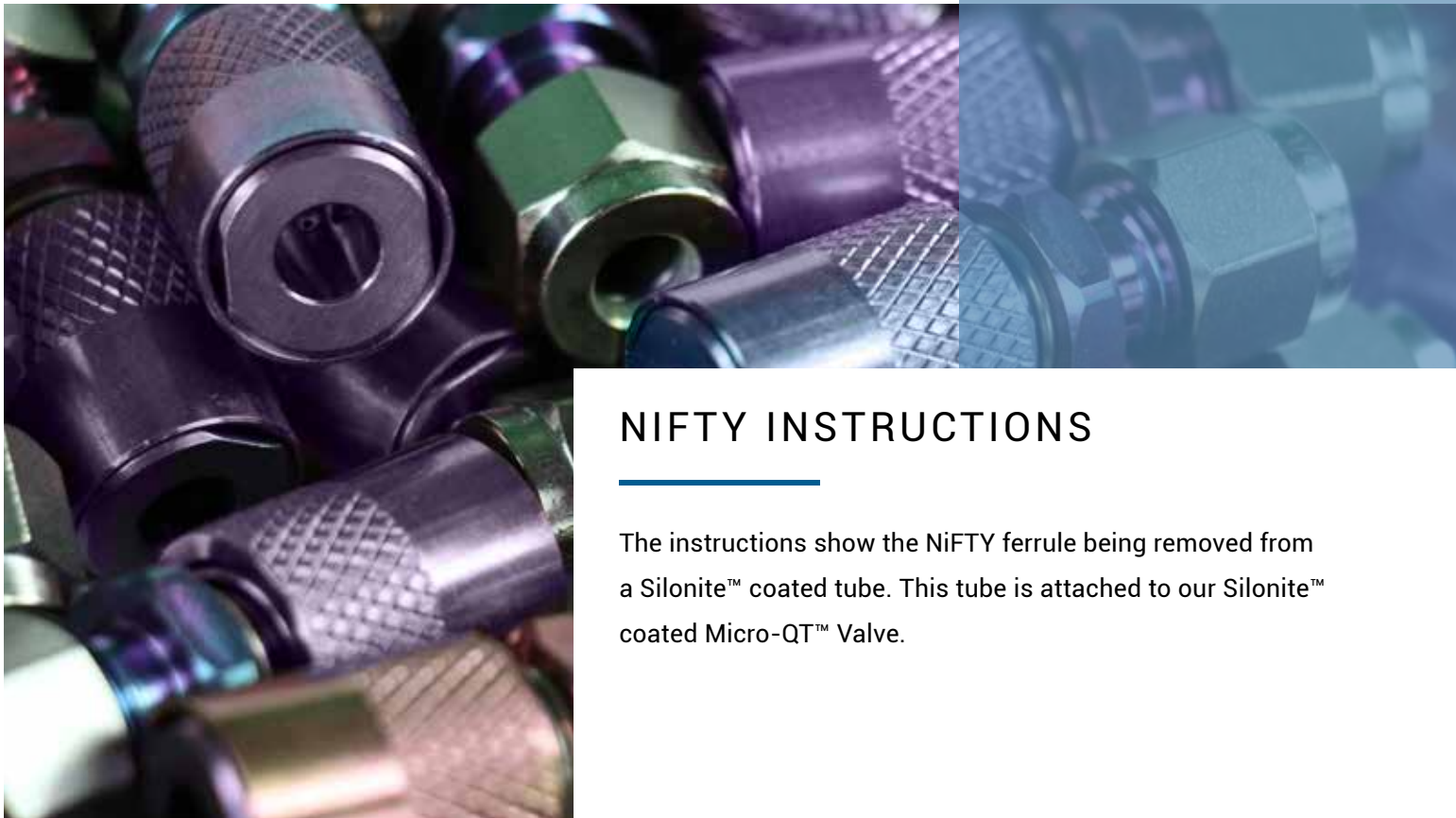
Installation of NIFTY ferrules is easy.  
Simply add the split spacing washer.  
See instructions on the next page.





# ASSEMBLY





## NIFTY INSTRUCTIONS

---

The instructions show the NiFty ferrule being removed from a Silonite™ coated tube. This tube is attached to our Silonite™ coated Micro-QT™ Valve.

# DISASSEMBLY





**NICKEL FERRULE TECHNOLOGY**

**Learn more about us:**



[entechinst.com](http://entechinst.com)



[facebook.com/entechinst](https://facebook.com/entechinst)



[twitter.com/entechinst](https://twitter.com/entechinst)



[linkedin.com/company/entech-instruments-inc](https://linkedin.com/company/entech-instruments-inc)

Entech Instruments  
2207 Agate Court  
Simi Valley, CA 93065  
Phone: 805-527-5939

Nifty -201110 - 3.1

© 2020 Entech Instruments. Silonite™ and Nifty™ are trademarks of Entech Instruments. All Rights Reserved.



**NiFTY - Ferrule Remover  
Part# 30-40900 - 1/4"**



**NiFTY - Nickel Ferrules (10 pk)  
Part# 30-40400 - 1/4"**