



See What's Really There™

FLOWMATE

Face-Sealing Adapter

***Rotate to hand-tighten.
No more tools!***





FlowMate

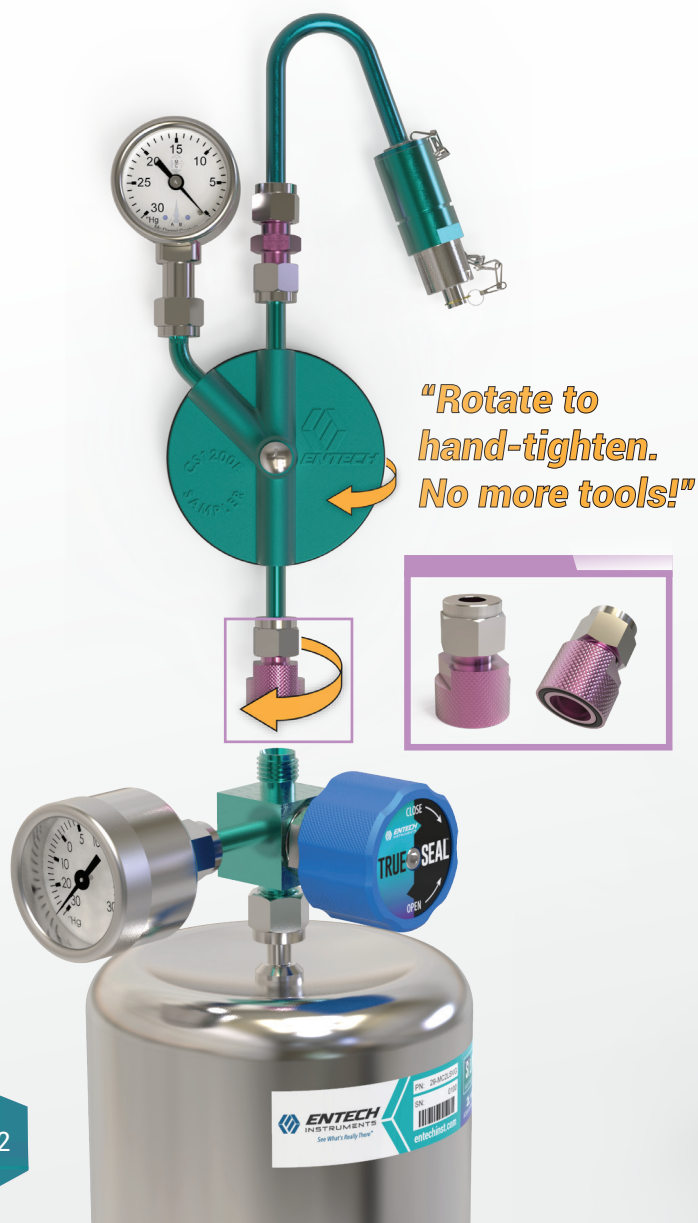
Inert Tool-Free Fittings for Air Sampling & Analysis

For field sampling. FlowMate to Compression (Part # FM4-400S)
- 1/4" Face-Sealing FlowMate to 1/4" compression Adapter compatible with TrueSeal™ Valves.

The FlowMate Tube Adapter allows for the CS1200E and other sample introduction fittings to be quickly hand tightened to the top of any TrueSeal valve providing an efficient and reliable alternative to tool tightened fittings.

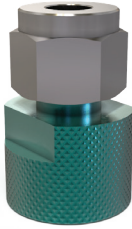
For the lab. FlowMate to MQT (Part # FFM4-MQTS) -
1/4" Face-Sealing FlowMate to Male QT Valve Adapter compatible with TrueSeal™ Valves.

The FlowMate Micro-QT™ TrueSeal Valve adapter eliminates the need for nut and ferrule connections, making your canisters truly tool-free and providing an easy way to support robotic auto-sampler analysis and quick-connect canister cleaning.

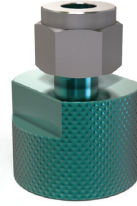


FlowMate

FlowMate to Compression



FM4-400S
1/4" Face-Sealing FlowMate to
1/4" compression, Silonite coated



FM4-200S
1/4" Face-Sealing FlowMate to
1/4" compression, Silonite coated

FlowMate to MicroQT Connections

FlowMate MQT



FM4-MQTS
1/4" Face-Sealing FlowMate to
Male QT valve, Silonite coated



FM2-MQTS
1/8" Face-Sealing FlowMate to Male
QT valve, Silonite coated

FlowMate FQT

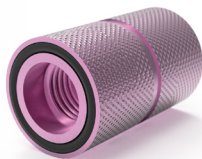


FM4-FQTS
1/4" Face-Sealing FlowMate to
Female QT valve, Silonite coated



FM1-FQTS
1/16" Face-Sealing FlowMate to
Female QT valve, Silonite coated

FlowMate to FlowMate



FM4-FM4
1/4" Face-Sealing FlowMate to
1/4" Face-Sealing FlowMate

Chameleon on Flow Professor

utilizing the FM4-FM4 FlowMate fitting.



Inert Tool-Free Fittings for Air Sampling & Analysis

Learn more about us:



entechinst.com



facebook.com/entechinst



twitter.com/entechinst



linkedin.com/company/entech-instruments-inc

Entech Instruments
2207 Agate Court
Simi Valley, CA 93065
Phone: 805-527-5939

FlowMate -230206 -1.0