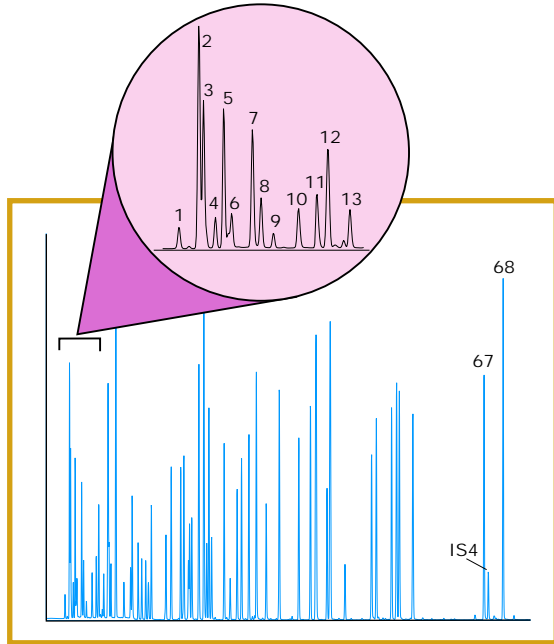


# Ambient Air/EPA Methods

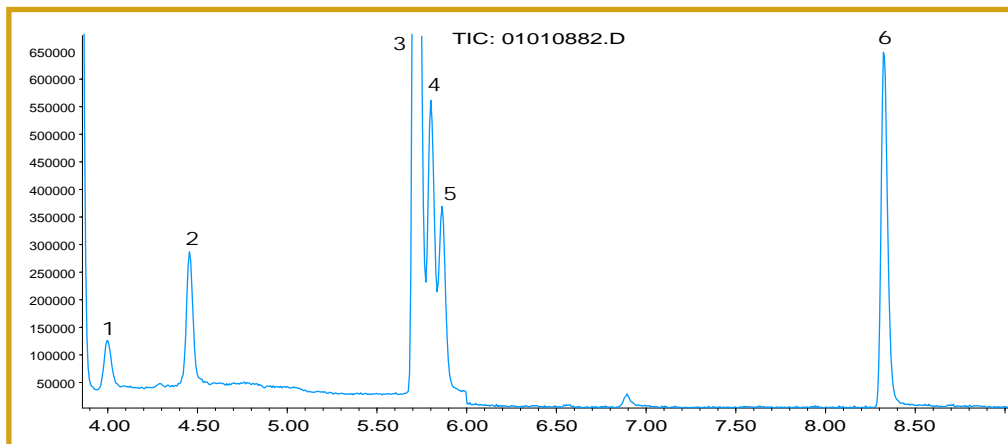
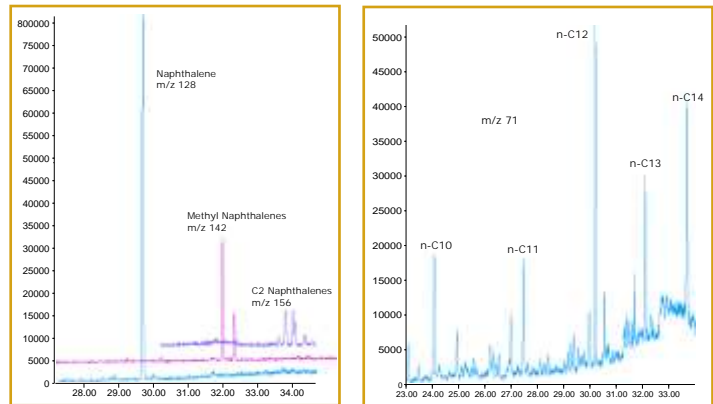
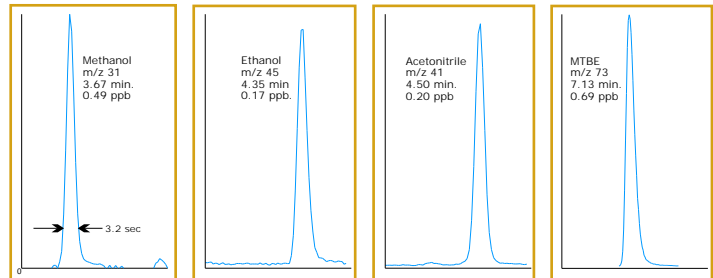
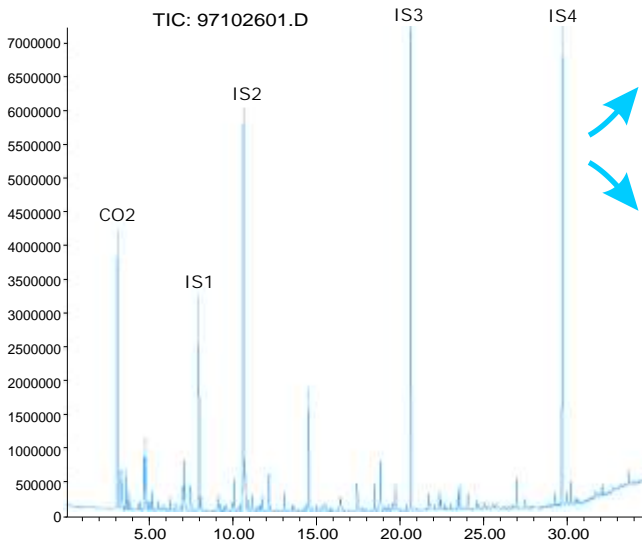


## 68 Component, 20 ppb Polar/Non-Polar Air Toxics Standard

Instrument: 7100A  
 System Configurations:  
 A,B,C,D (Pg. 41)  
 Sample Size: 400cc  
 Concen. Procedure: 3-Stage  
 Microscale Purge & Trap  
 Focuser Heating Rate:  
 >10,000°/min  
 Column: HP1, 50m,  
 0.32mm ID, 1.05um film  
 Oven Start Temp.: 35°C  
 GCMS: Agilent 5973  
 MS Mode: Full Scan  
 Tune: BFB

1. CO2
2. COS
3. Freon 12
4. Chloromethane
5. Freon 114
6. Vinyl Chloride
7. Methyl Mercaptan
8. Bromomethane
9. Chloroethane
10. Acetonitrile
11. Acetone
12. Freon 11
12. Freon 11
- 67 Trichlorobenzene
- 68 Hexachlorobutadiene
- IS4 1,2-Dibromobenzene

## 24 Hr Ambient Air Sample, Simi Valley, CA - 10/21/97



- Carbonyls by TO15  
 Total Ion Chromatogram
1. 50 PPBv Formaldehyde
  2. 20 PPBv Acetaldehyde
  3. 50 PPBv Acetone-d6
  4. 20 PPBv Acetone
  5. 20 PPBv Propanal
  6. 20 PPBv 2-Butanone