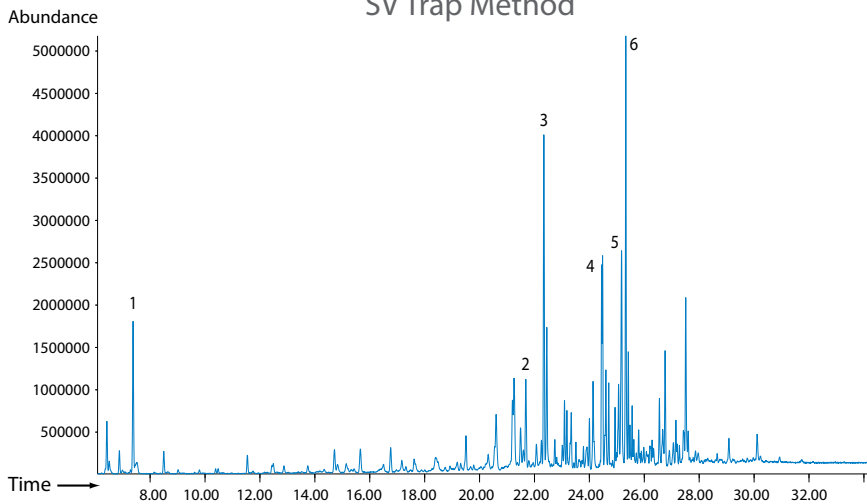


## Volatiles in Food Packaging

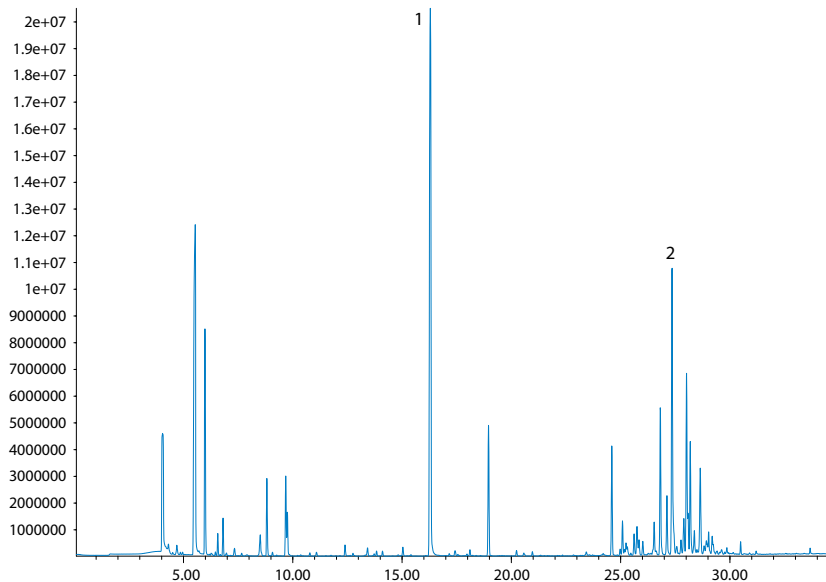
Polyethylene Granules at 100°C  
SV Trap Method

Inlet: 7500/7101AR/SV Trap (see pp.12,8)  
 Sample Size: 100cc  
 Matrix Management: On Column  
 Column: HP1, 60m, 0.32mm ID, 1um film  
 Carrier: He, 1.5 ccm constant flow  
 Oven Temp: 35°C 3 min, 6°C/min to 120°C  
 10°C/min to 150°C, 25°C/min  
 to 250°C, 10min hold  
 GCMS: Agilent 6890/5973N  
 MS Operation: 33-270 amu, 3.1Hz, EI,  
 EM=0 Rel.  
 Tune: BFB

**Compounds:**

1. Hexane
2. C11 Alkane
3. C12 Alkane
4. C14 Alkane
5. C15 Alkane
6. C16 Alkane

## Cheese Wrapping



Inlet: 7500/7101A (see pp.12,6)  
 Sample Size: 100cc  
 Matrix Management: MP&T  
 Column: HP1, 60m, 0.32mm ID, 1um film  
 Carrier: He, 1.5 ccm constant flow  
 Oven Temp: 35°C 5 min, 6°C/min to 150°C  
 15°C/min to 220°C, 4min hold  
 GCMS: Agilent 6890/5973N  
 MS Operation: 33-270 amu, 3.1Hz, EI,  
 EM=0 Rel.  
 Tune: BFB

**Compounds:**

1. Toluene
2. Heavy Paraffins