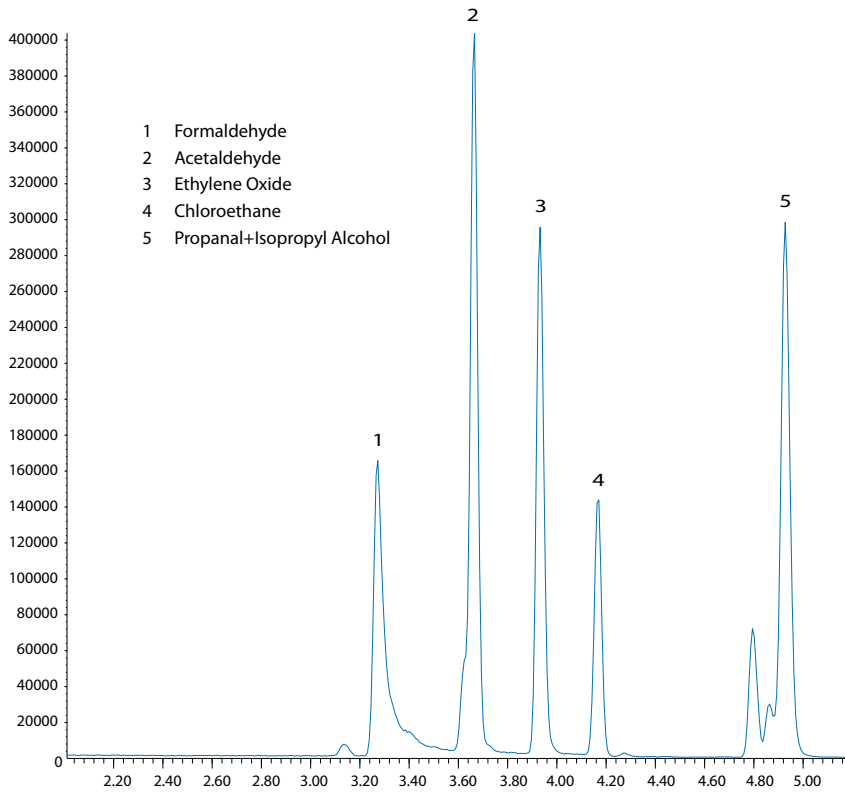
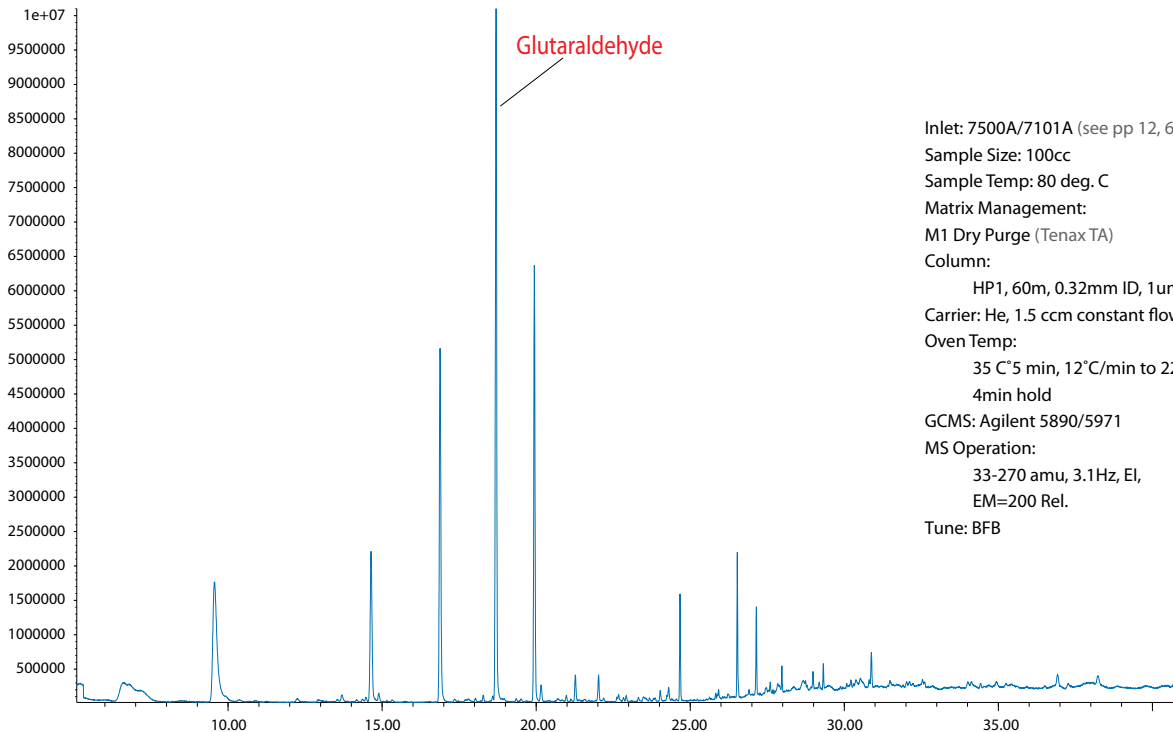


# Formaldehyde and Carbonyls using Silonite® Canisters



Inlet: 7101A (see p.6)  
 Sample Size: 100cc  
 Sample Temp: Ambient  
 Matrix Management: Extended CTD  
 Column:  
 HP1, 60m, 0.32mm ID,  
 1um film  
 Carrier: He, 1.5 ccm constant flow  
 Oven Temp:  
 35 C°5 min, 6°C/min to 150°C  
 15°C/min to 220°C, 4min hold  
 GCMS: Agilent 5973  
 MS Operation:  
 29-180 amu, 3.1Hz,  
 EI, EM=0 Rel.  
 Tune: BFB  
 Concentrations:  
 Formaldehyde: 25 PPB  
 Other Carbonyls: 10 PPB

## 100 PPB Glutaraldehyde



Inlet: 7500A/7101A (see pp 12, 6)  
 Sample Size: 100cc  
 Sample Temp: 80 deg. C  
 Matrix Management:  
 M1 Dry Purge (Tenax TA)  
 Column:  
 HP1, 60m, 0.32mm ID, 1um film  
 Carrier: He, 1.5 ccm constant flow  
 Oven Temp:  
 35 C°5 min, 12°C/min to 220°C,  
 4min hold  
 GCMS: Agilent 5890/5971  
 MS Operation:  
 33-270 amu, 3.1Hz, EI,  
 EM=200 Rel.  
 Tune: BFB